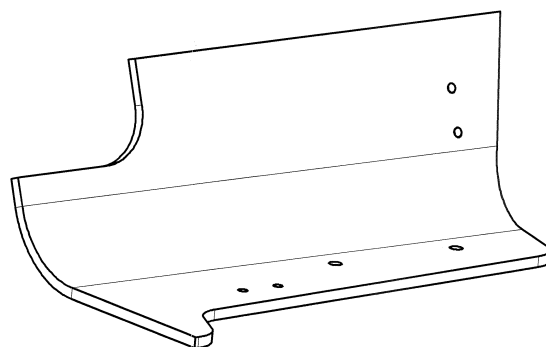
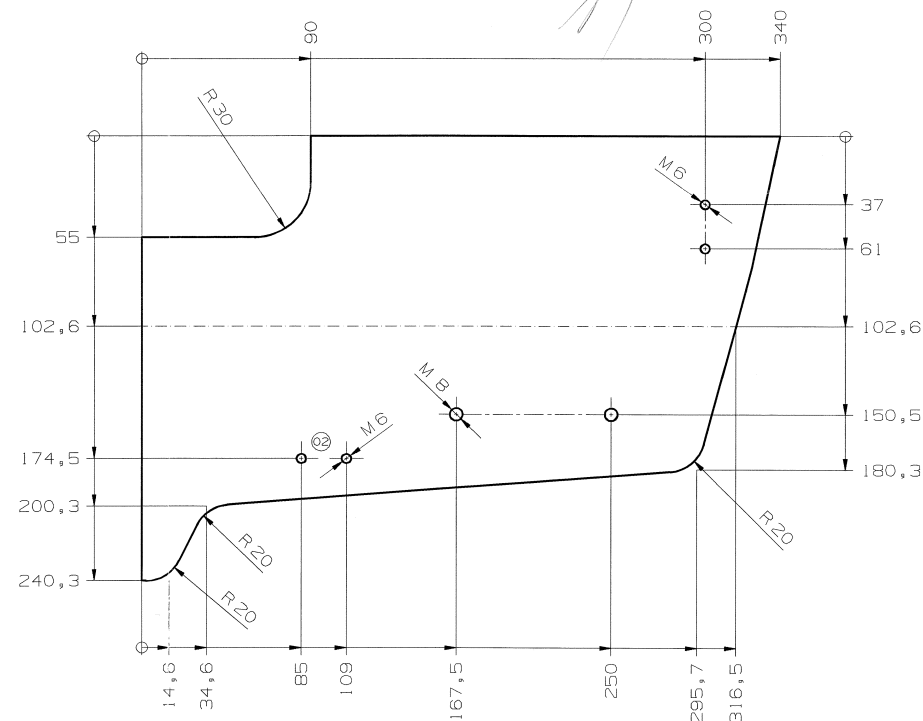
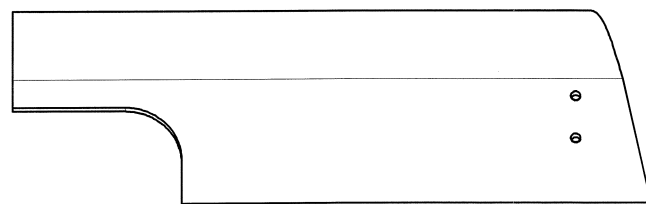
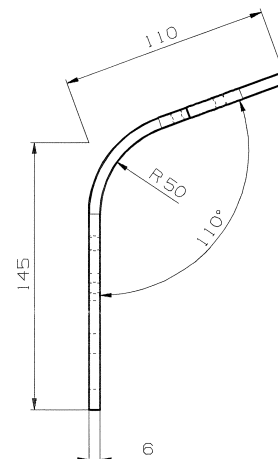
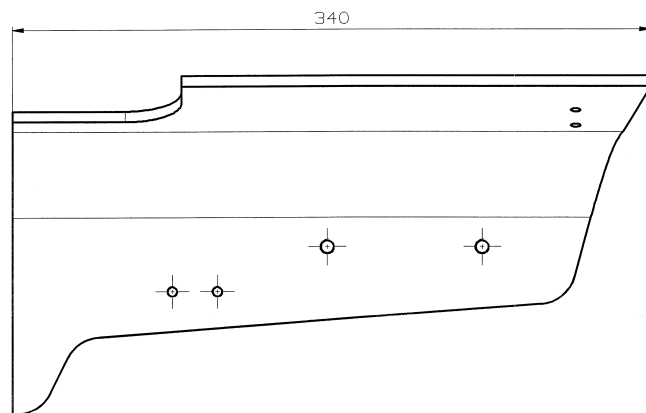


PŘEKLAD

date: 24. 10. 2014

PROVEDL/A

p. roudkova



13-11-2014

ARCHIV

2

NZ 141 012 18

ISO 2768-TOLERANCE PRO:

*POLEM LASEREM
OHYBAVA*

General tolerances for laser cutting DIN 2310 - 5 - H up to 3mm / -K over 3mm		Projection see ISO 128		Surface Quality		APPROVED FOR		Serienfrei (F4)	
General tolerances for ribbing / bending DIN 6930 - 2 - m		Scale		Standard Color		Name		Date	
		1:2		A2		KRAU SCHMIGGE		19.07.2013	
Bend Tolerance see DIN 6930 - 2 - m		Welding Tolerance see DIN 151 ISO 15520-B		General Tolerance see DIN ISO 2168 - mK		Surface Condition see DIN ISO 1302		Laser-Cut Tolerance see DIN 2310-5-H up to 3mm / -K over 3mm	
Copyright reserved to ISO 16016		Name		Versteifung		Additional Text		Mat-Nr	
								Doc-Nr	
								2000137678	
								Version	
								02	